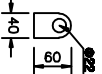
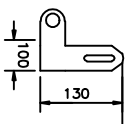
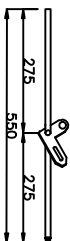
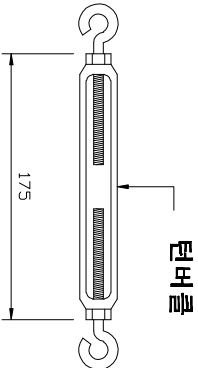
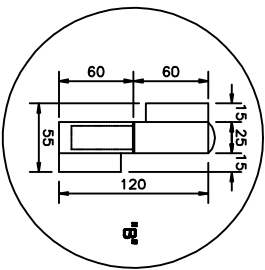
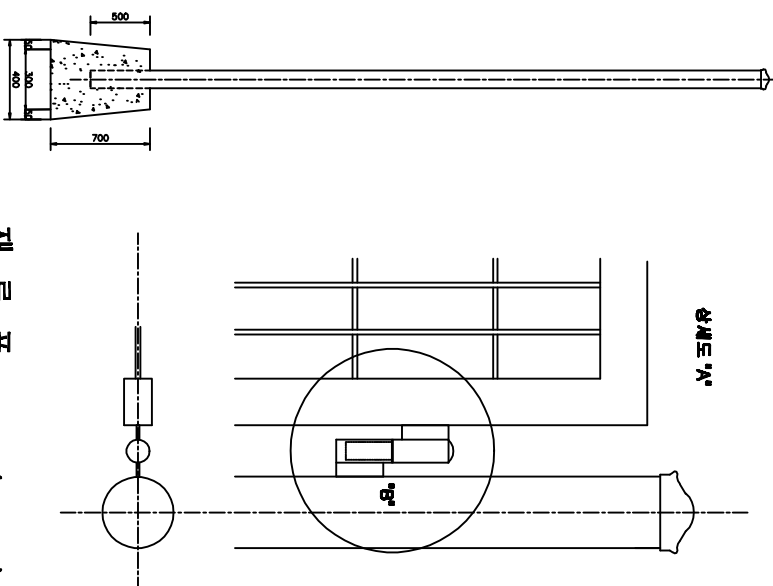
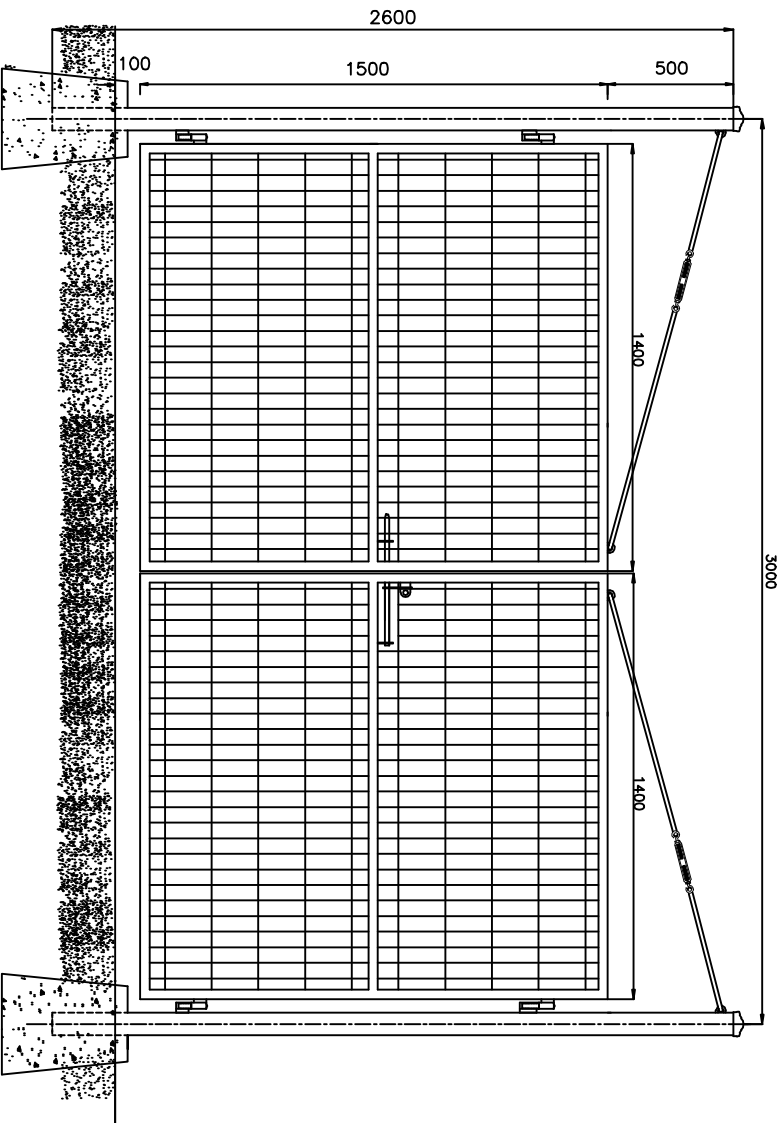


□ 메쉬첼스 출입문 (쌍문) H : 1500 W : 3000 □



빗장 상세      빗장 고리

재료표

(H: 1500)

품명	규격	단위	수량	비고
메쉬망	1500*2000	m <sup>2</sup>	4.5	본체도장
주주철	∅89.1*2600	EA	2	본체도장
주주철	∅89.1용	EA	2	본체도장
경철	80*3T	EA	4	
잠금장치	∅18x550	EA	1	
시각파이프	50*30*2T	M	15	
던버클		SET	2	

도면명 DRAWING TITLE	메쉬첼스	설계 DESIGN BY	날짜 DATE	200	도면번호
공사명 PROJECT TITLE		제도 DRAWING BY	축척 SCALE		MF2D-1500


**(주)남영첼스**

TEL:053)857-4654  
 FAX:053)857-4288  
 [712-837]경북 경산시 진량읍 신상리 1190-20