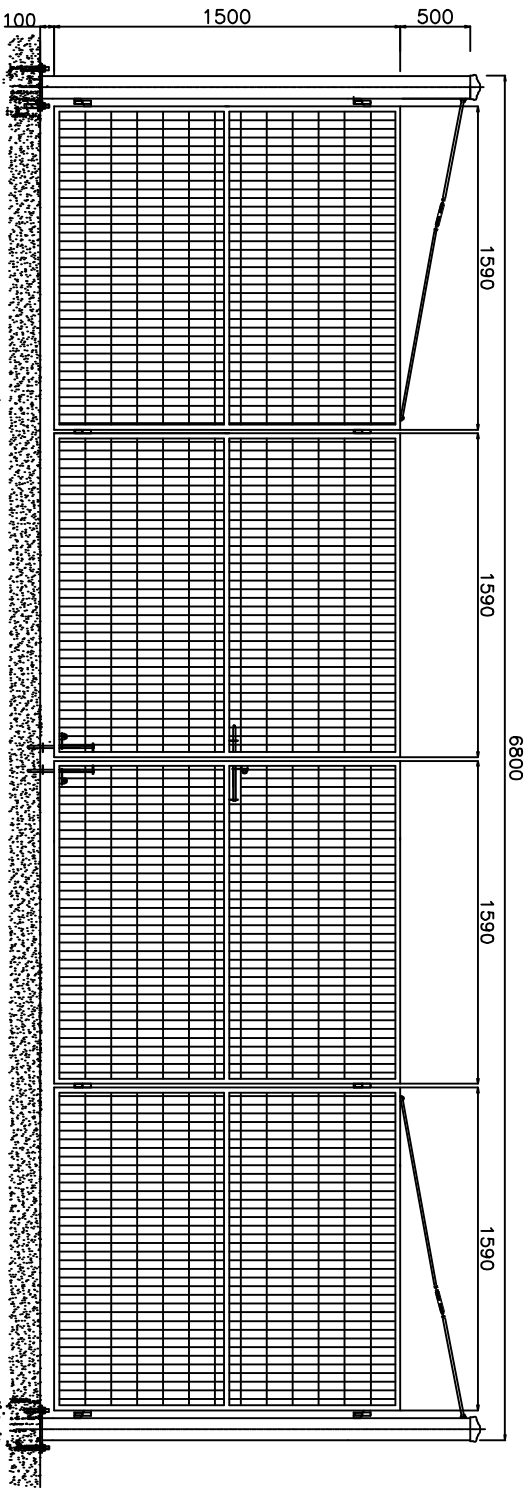
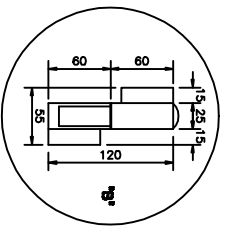
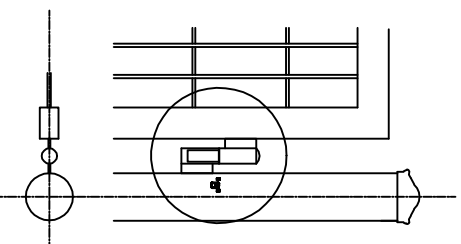


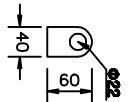
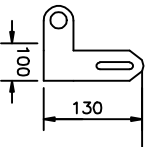
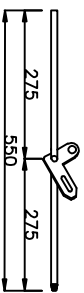
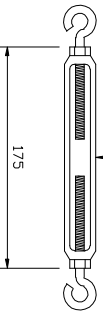
□ 메쉬웬스 접이식출입문 H : 1500 W : 6800 □



상세도 'A'



던버클



빗장상세 빗장고리

재료표

(H : 1500)

품명	규격	단위	수량	비고
주주	Ø165.2*2.9t	M	4.2	분체도장
주주	Ø165.2 용	EA	2	분체도장
메쉬망	50*150	m2	10.2	분체도장
사각파이프	50*30*1.5T	M	25.6	
잠금장치	Ø18x550	EA	1	
경철	계좌용	EA	8	
던버클	1/2	SET	2	
PLATE	300*300*9t	개	2	분체도장

도면명 DRAWING TITLE	메쉬출입문	설계 DESIGN BY	날짜 DATE	200 . . .	도면번호 MF4D-1500
공사명 PROJECT TITLE		제도 DRAWING BY	축척 SCALE		

☞ (주)남영웬스 TEL:053)857-4654

[712-8377]경북 경산시 진량읍 신상리 1190-20 FAX:053)857-4288